



# Pool water testing

## Public pool water



As per the New Zealand Swimming Pool Standard 5826:2010, a public pool is any pool not used for domestic purposes.

This includes pools in commercial establishments, schools, institutions, clubs, the hospitality industry, community centers and local authority pools. Therefore, it is important to test all pools used by the public.

### Available analysis:

Microbiology only:

- ▶ E. Coli
- ▶ Faecal coliforms
- ▶ Staphylococcus aureus
- ▶ Pseudomonas aeruginosa count
- ▶ Heterotrophic plate count @ 37°C

We highly recommend conducting on-site tests for Free Available, Combined, and/or Total Chlorine, as they are not included in the packages we provide.

Note: Analytica does not provide consulting services on results or how to treat your water. Our recommendation is to present the analytical report to appropriately qualified water treatment or water quality consultants.

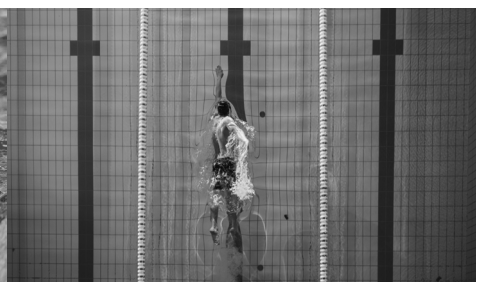
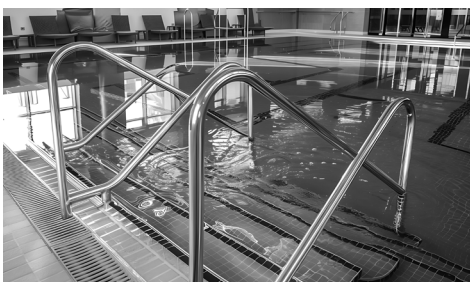
### Sampling and Containers

The quality of results depends on the sampling technique used. This saying is commonly used in various testing fields such as water, clinical, soil, or agricultural testing.

Analytica provides pre-packaged sampling kits that contain the following (free of charge):

1. Poly bin with ice packs and pre-paid courier sticker for easy return.
2. Appropriate sample containers.
3. Chain of Custody paperwork can be downloaded from: [www.analytica.co.nz/resources/download-forms](http://www.analytica.co.nz/resources/download-forms)

Please ensure that the customer information is included, along with a request for testing suites and all necessary contact details for sending the results and final invoice.



**General enquiries and support:** Ph: +64 7 974 4740 E: [ALSEnviro.Hamilton@alsglobal.com](mailto:ALSEnviro.Hamilton@alsglobal.com)  
**Order Sample Kits** [ALSNZ.dispatch@alsglobal.com](mailto:ALSNZ.dispatch@alsglobal.com)